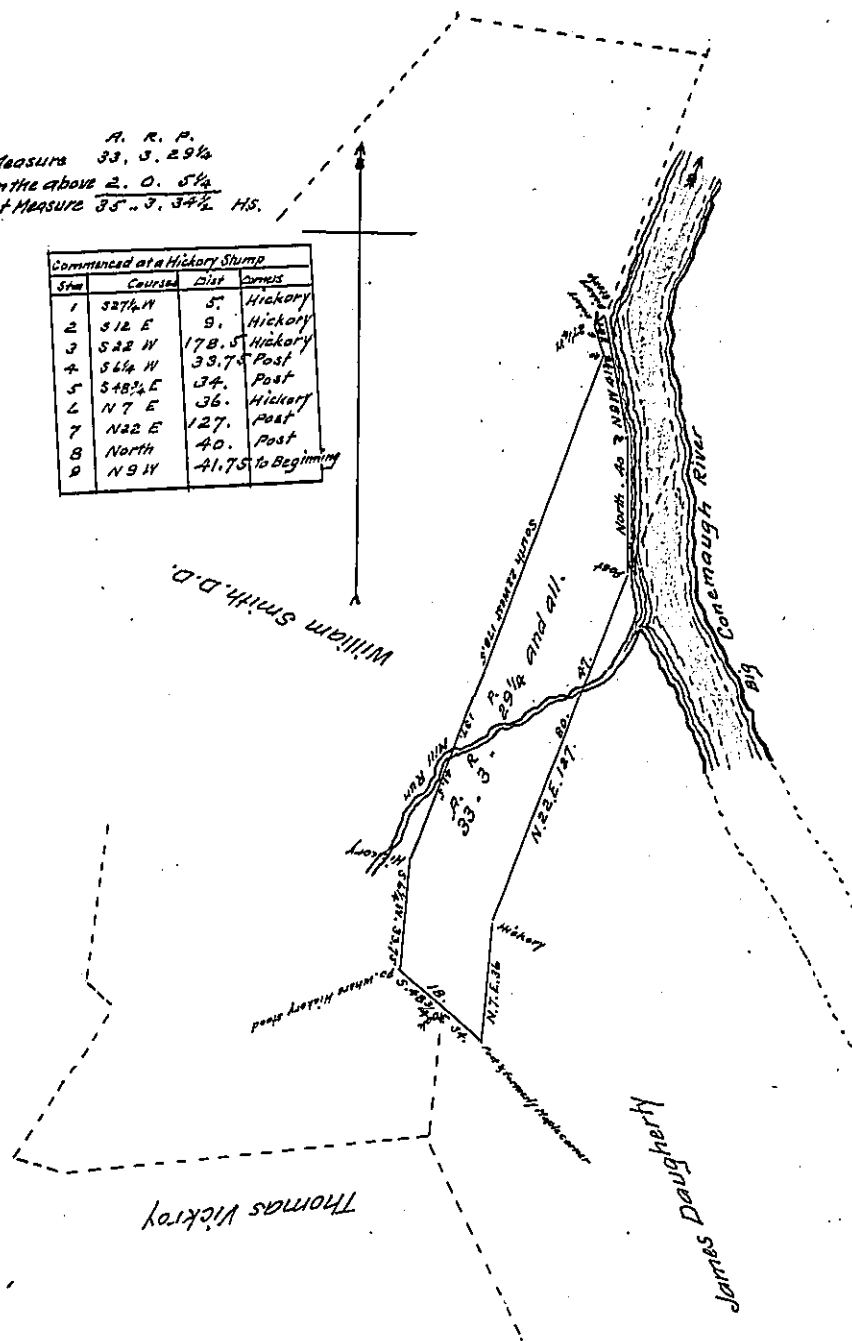


A. R. P.  
 Neat Measure 33.5.29 1/4  
 add 6 p cent on the above 2.0.5 1/4  
 Exact Measure 35.5.34 1/2 Hs.

Sta	Course	Dist	Remarks
1	S 87 1/2 W	5.	Hickory
2	S 12 E	9.	Hickory
3	S 22 W	178.5	Hickory
4	S 4 1/4 W	39.7	Post
5	S 48 1/2 E	34.	Post
6	N 7 E	36.	Hickory
7	N 22 E	127.	Post
8	North	40.	Post
9	N 9 W	21.75	to Beginning



Situated on the South-Western side of Big Conemaugh River and on the East side of Laurel Hill, including part of Mill run, in Conemaugh Township, Cambria County, about two miles below Johnstown, containing Thirty three acres, three Roods, and twenty nine and a fourth perches, and the usual allowance of six p Cent for Roads &c Surveyed 15<sup>th</sup> day of November 1845 in pursuance of a Warrant dated sixth day of November 1845, for George Bhearn by To Honbl John Laporte Haden Smith D.S. Cambria County

Surveyor General.

Note, about 16 acres of the Northern part is clear'd, but has not been farmed for the last thirty years, there is a small shanty on it, put there by Bhearn, but no other building. The entire tract is claimed by the Heirs of William Smith as being a portion of the Smith tract adjoining.

Turn over

IN TESTIMONY that the above is a copy of the original remaining on file in the Department of Internal Affairs of Pennsylvania, made conformably to an Act of Assembly approved the 16th day of February, 1833, I have hereunto set my Hand and caused the Seal of said Department to be affixed at Harrisburg, this thirteenth day of January 1909.

Henry Houch  
 Secretary of Internal Affairs.